

Automotive references

*Detailing lines, car & people movers, external car wash,
water test conveyors, inspection conveyors, skid conveyors*

Reference List



- Audi Brussels, carwash application
- BMW Tiexi, China, people mover conveyors
- BMW Sindelfing, Germany, inspection conveyor
- BMW Nedcar, NL, Skid accumulation conveyor, Paintshop inspection conveyors, Wax conveyor, Water test conveyor
- BMW Spartanburg (SC), Skid handling conveyors
- Chrysler Warren (IL), USA, final inspection conveyor
- Citroën Vigo, Spain, SKID handling paint shop
- Daimler Sindelfingen, Carwash application
- Daimler, Port Elizabeth, South Africa, water test
- FIAT, Italy, Logistical centre conveyors, dual lane
- Ford Kansas City, Tire & Rim conveyor
- Ford Valencia, Spain, Doortrim conveyor, Watertest & inspection conveyor
- GAC Toyota, China, Inspection conveyor
- Great Wall Automotive, finish line & inspection conveyor
- Hyundai Montgomery (AL), USA, people mover conveyors assembly area
- Hyundai Montgomery (AL), USA, Tire handling con
- Hyundai Anapolis (Brasil), Inspection conveyor
- ICO / Mazda, Zeebrugge, Belgium, Madza terminal, Inspection conveyor
- Mr. Wash, Düsseldorf, Essen, Dortmund and Stuttgart, all in Germany, Detailing & Exterior Wash
- Nissan Sunderland, UK. Bumper carrier overhead conveyor. Bumper assembly.
- Nissan Smyrna, USA, Final inspection conveyor
- Renault Tanger, Maroc, Skid handling in paint shop area
- Seat Barcelona, Spain. SKID handling in paint shop
- Skoda Aurangabad, India. Water test application
- Skoda Mlada Boleslav, People Mover Assembly Octavia
- Skoda Mlada Boleslav, Inspection conveyors Fabia
- Tesla Motors, Palo Alto, USA, Suspension sub-assembly conveyors
- Volkswagen Emden, Rework conveyor
- Volkswagen Emden, People mover conveyors
- Volkswagen Hannover, Finish conveyors
- Volkswagen Taubaté, Brasil, Skid Handling application
- Volkswagen Taubaté, Brasil, People Mover application
- Volkswagen Hannover, carwash application
- Volkswagen Hannover, Water test application
- Volkswagen Hannover, Finish conveyors
- Volkswagen Pune, India, Final Inspection conveyors
- Volkswagen Pune India, Water Test conveyor
- Volkswagen Navarra, Spain, Skid Handling
- Volkswagen Navarra, Spain, ZP8 conveyor
- Volkswagen Changsha, China, BA7 & ZP8 conveyors (under construction)
- Volkswagen Ningbo, China, Skid handling conveyors
- Volvo Gent, Belgium, Skid Handling
- Volvo Gent, Belgium, Inspection conveyor
- Volvo Torslanda, Inspection conveyor

Note: This list is not complete. Several applications have been installed of which we do not have specific installation details



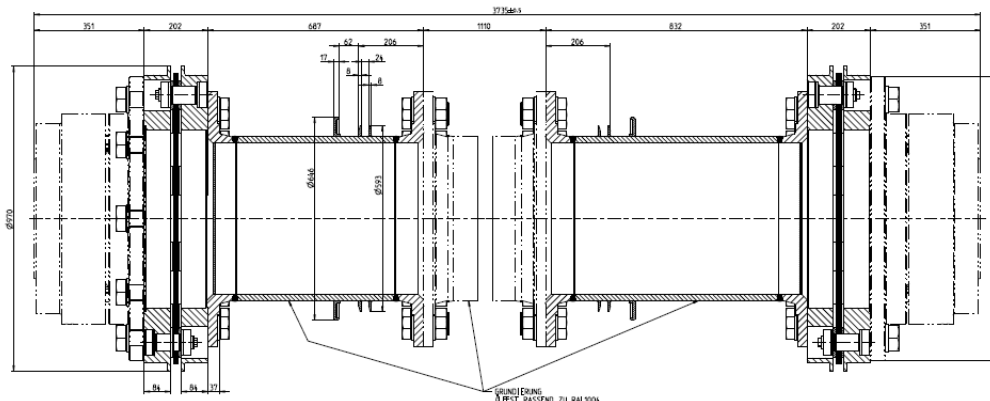
1. Automotive Body Shop References

Application Press Shop



Schuler Pressen, Germany

- **BMW Dingolfing:**
 - Modulflex torsional stiff disc coupling, diameter: 970mm
- **Capabilities:**
 - Nominal Torque: 400.000 Nm
 - Maximum Torque: 700.000 Nm
 - Max. axial misalignment: $\pm 10\text{mm}$
 - Max. radial misalignment: $\pm 37,4\text{mm}$



Example picture

Application Press Shop

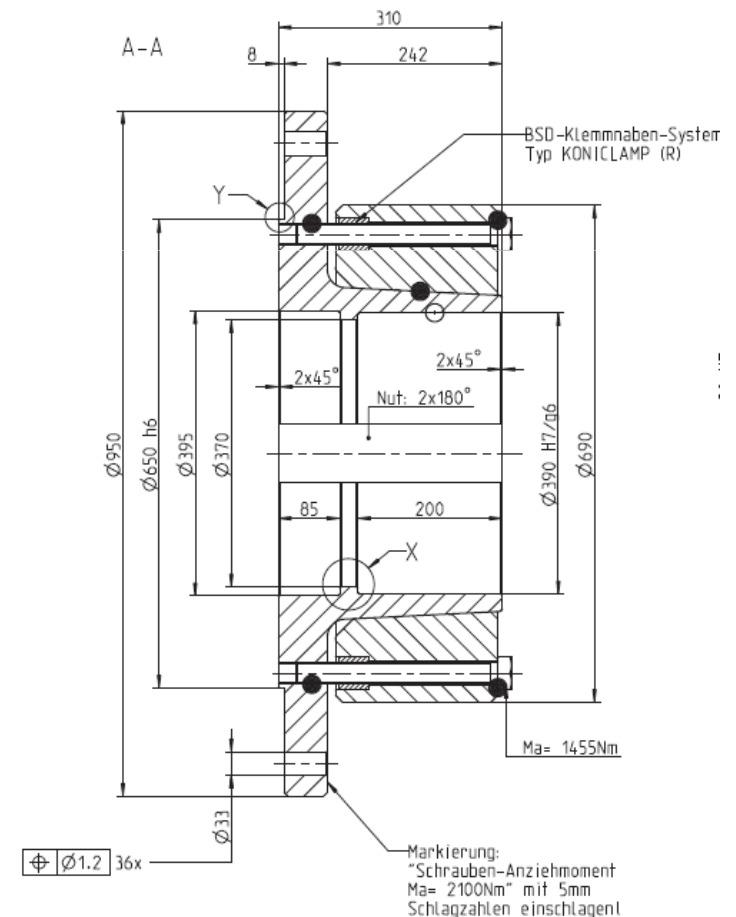


Schuler Pressen, Germany

- Servo pressen:
 - Koniclamp Hubs, diameter: 950mm
- **Coupling parameters:**
 - Max alternating torque: 580.000 Nm
 - Maximum torque: 820.000 Nm
 - Maximum speed: 200mm⁻¹
 - Moment of inertia: 69,8 Kgm²



Example picture



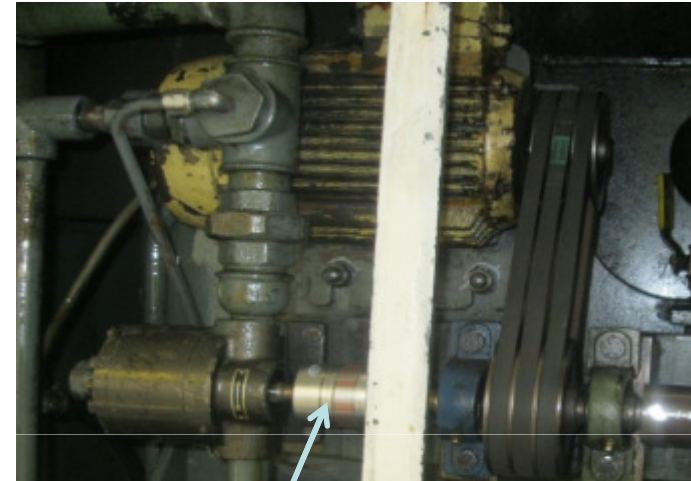
Application Press Shop



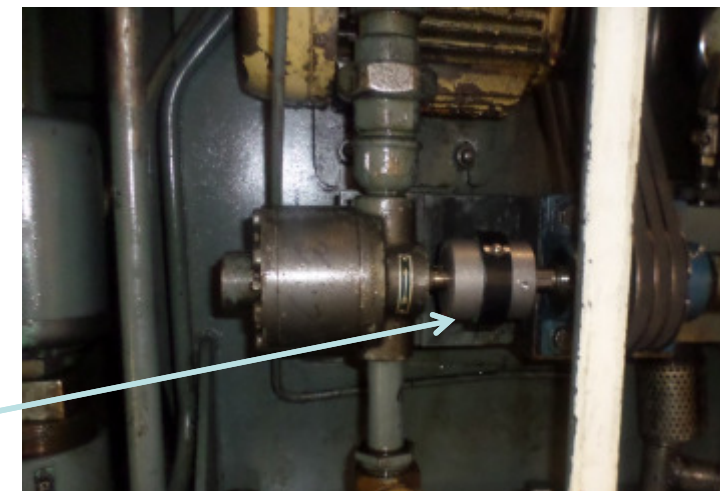
FIAT-Tofas Turkey



- Falk Wrapflex 5R10 elastomeric coupling
 - Press hydraulic pump,
 - Previous : KTR Rotex GS24 – difficult mounting problem,
 - New one : Elastomeric coupling, easy and faster installation, replace in place and reduced maintenance work,
 - Work efficiently,
 - November 2014



Previous ; Rotex



New one : Wrapflex



2. Automotive Body Shop References



Application People Mover



Volkswagen Bratislava, Slovak

- **FR-PA6999H4-K36 Hybrid chain:**
 - People movers in Body shop polish line
 - 4 x 7mtr, 8 x 14 mtr, 4 x 21 mtr, 4 x 35 mtr long conveyor, 36-inch wide
 - Skid & Car body in Body shop polish line
 - 2 x 42mtr, 2 x 49 mtr, long conveyor, 48-inch wide
 - FR-PA6999H4 equipped, meeting DIN4102-B1
 - ESD specifications $<10^3$ Ohm/sq
 - Atex 92 zone 22 approved
- **Start-up: July 2014**



3. Automotive Paint Shop References



Application Paint shop



Ford Otosan Inonu Truck Plant Turkey



- Falk Wrapflex 10R10 elastomeric coupling
 - Water circulation pump,
 - KTR Rotex– mounting problem,
 - Elastomeric coupling, easy and faster installation, reduced maintenance work, replace in place
 - Works without problem
 - December 2014



Application Report Skid Handling



Volkswagen Navarra, Pamplona, Spain

- BSM3125-K4
 - 12 mtr long dry running dual lane 4-inch (101mm) wide SKID conveyor.
 - in conveying area painting department
 - Replacing Reinforced Rubber Belt due to drive and timing issues
 - Located in Navarra Spain
 - Equipped with BSM3125-4 chains in wear resistant plain acetal with plastic pins
 - Running in MCC3000 profiles
 - Start-up July 2009, 2nd phase executed end of 2009, 3rd executed end of 2010.



Application Report Skid Handling



Volkswagen Ningbo, China

- BSM3125-K4
 - 10 mtr long dry running dual lane 4-inch (101mm) wide SKID conveyor.
 - in conveying area painting department
 - Located in Ningbo factory, China
 - OEM: Suteng Manufacturing company
 - Equipped with BSM3125-4 chains in wear resistant plain acetal with plastic pins
 - Running in MCC3000 profiles
 - Start-up expected February 2013



Renault Tanger Méditerranée, Morocco

- HCAS3125-K4
 - Various (K4 - 101mm) wide SKID conveyors up to 15 mtr long dry running dual lane 4-inch.
 - Longitudinal and cross conveyor applications in Paint Shop area
 - Newly installed project in 2010 by Dürr Paint and Assembly systems.
 - Located in Tanger, Maroc
 - Equipped with HCAS3125-4 chains in wear resistant Anti-Static acetal (10^{11} - 10^{13}) with plastic pins

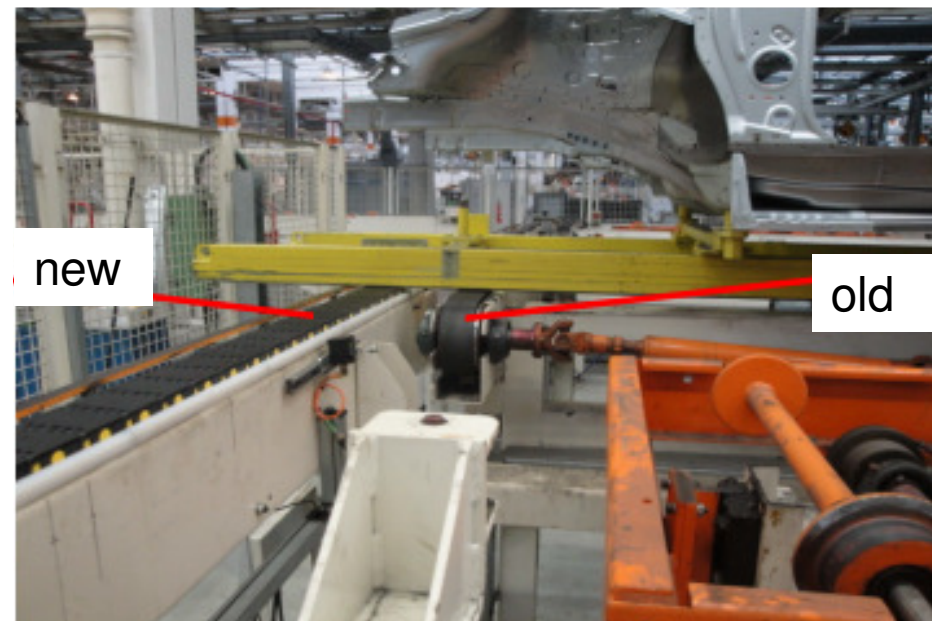


Application Report Skid Handling



Volkswagen Taubaté, São Paulo, Brasil

- BSM3125-K4 SKID chain
 - Three (3) 8 mtr long dry running dual lane 4-inch (101mm) wide longitudinal SKID conveyors.
 - in conveying area painting department
 - Replacing Reinforced Rubber Belt due to drive and timing issues
 - Equipped with BSM3125-4 chains in wear resistant plain acetal with plastic pins
 - Running in MCC3000 profiles
 - Start-up August 2010



Application Report Skid Handling



Citroen Vigo, Spain

- BSM3125-K4
 - Cross conveyor in paint shop (K4 - 101mm) wide.
 - Handling SKIDs after the paint area
 - Conveyor 10 mtr long dry running dual lane 4-inch.
 - Installation date July 2011
 - Standard BSM acetal chain with Polyester pins
 - Located in Vigo, Spain



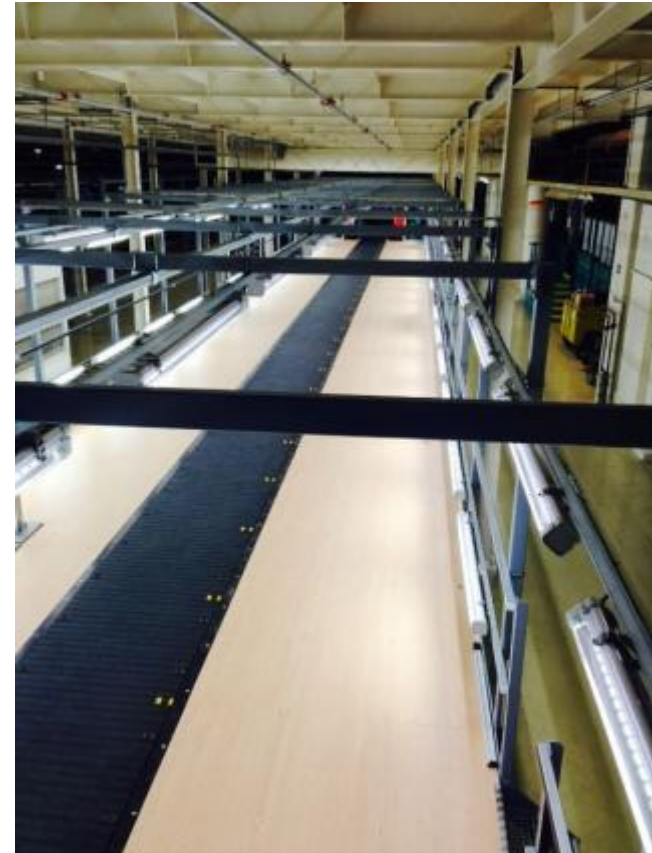
Application Report Skid inspection



VDL Nedcar (BMW), Netherlands



- HCAS3125-K44
 - Inspection conveyor for car bodies on SKIDs in the paint area.
 - 2 conveyors of 40 mtr long
 - Using SKID guiding links and RubberTop link to secure the skid
 - Installation date August 2013, start up July 2014.



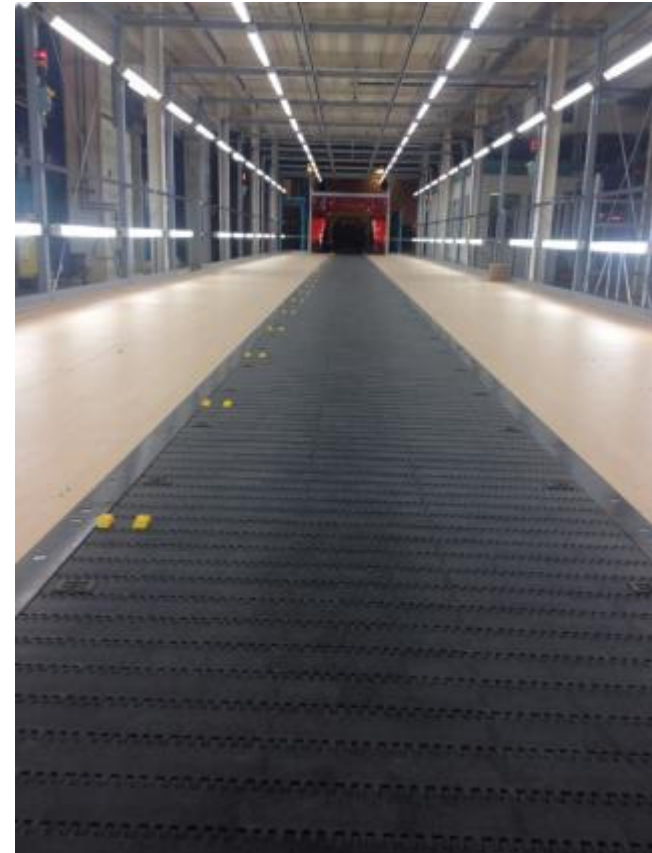
Application Report Skid Polish



VDL Nedcar (BMW), Netherlands



- F60 polish line project
 - Polish conveyor for car bodies on SKIDs in the paint area.
 - Skid weight up to 600 Kg
- HCAS3125-K44 Spec
 - Conveyor length 35 mtr (115ft)
 - Chain width: 1118mm
 - Using SKID guiding links and RubberTop link to secure the skid
- Installation date August 2014

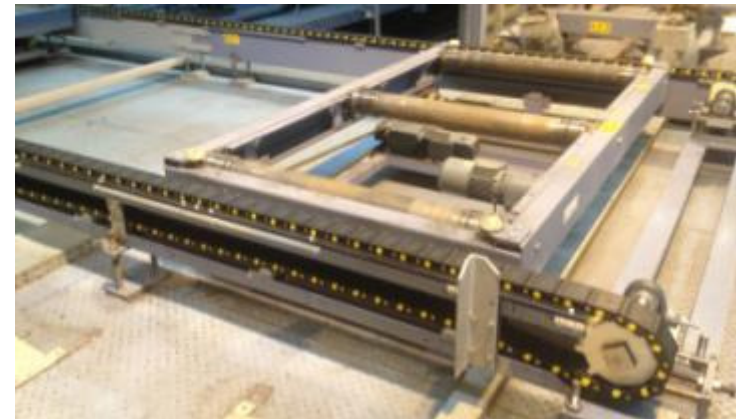


Application Report Paint Shop



VDL Nedcar (BMW), Netherlands

- BSM3125-K3,2 & K4
 - Cross conveyors in paint shop.
100mm (K4) and 80mm (K3,2) wide.
 - Handling SKIDs between the paint shop and assembly line.
 - Replacing 100mm and 80mm contitech rubber reinforced belt
 - Conveyors 12 mtr long dry running
 - Standard BSM acetal chain with Polyester pins
 - Start up date: June 2014
 - Located in Born, Netherlands



New conveyor set-up



Old conveyor set-up

Application Report Skid Handling



Seat Barcelona, Spain

- BSM3125-K4
 - Cross conveyor in paint shop (K4 - 101mm) wide.
 - Handling SKIDs after the paint area
 - Conveyor 10 mtr long dry running dual lane 4-inch.
 - Installation date December 2011, second phase installed March 2012
 - Standard BSM acetal chain with Polyester pins
 - Located in Barcelona, Spain



Application Report Paint Shop



BMW world wide

- Rex Carbon 12 B2 GL:
 - BMW world wide uses Rex Carbon chain as best practice in Body shop and paint shop Skid conveyors.
 - Rex Carbon chain offers maintenance free carbon bushing.
- Locations
 - Various global plant use Rex Carbon roller chain:
 - BMW Germany (various plants)
 - BMW Spartanburg (USA)
 - BMW Tiexi (China)
 - BMW Oxford (UK)



Application Report Paint Shop



VDL Nedcar (BMW), Netherlands



- BSM3125-K4
 - Longitudinal conveyors in wax cabin (K4 - 101mm) wide. One side skid guiding.
 - Handling SKIDs during the waxing and undercoat process of the car bodies.
 - Conveyor 60 mtr long dry running dual lane 4-inch, using just a main drive (no brake drive)
 - Installation date December 2013,
 - Standard BSM acetal chain with Polyester pins
 - Located in Born, Netherlands



Application Report Skid Polish



VDL Nedcar (BMW), Netherlands



- F60 polish line project
 - Polish conveyor for car bodies on SKIDs in the paint area.
 - Skid weight up to 600 Kg
- HCAS3125-K44 Spec
 - Conveyor length 35 mtr (115ft)
 - Chain width: 1118mm
 - Using SKID guiding links and RubberTop link to secure the skid
- Installation date August 2014



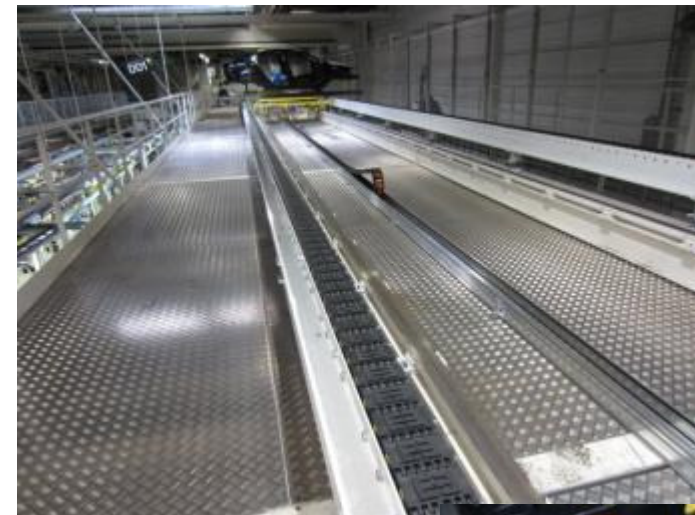
Application Report paint shop



Volvo Gent, Belgium



- BSM3125RT-K4 SKID chain
 - 42 mtr long cross buffer conveyor for SKID handling.
 - Positioned in the final assembly area
 - Equipped with BSM3125RT-K4
 - RubberTop chain in wear resistant plain acetal with plastic pins.
 - RubberTop execution is securing the position of the SKIDs in stop-start operation.
 - RubberTop surface on each link.
 - Running on Denirug® low friction profiles.
- Start-up: August 2011





4. Automotive Assembly Area References



Application Report Assembly



Volvo Gent, Belgium, PT5

- BSM3125RT-K4 SKID chain
 - 80 mtr long dual lane conveyor for SKID handling.
 - PT 5 (Pre Trim 5) position
 - Equipped with BSM3125RT-K4 (two tracks) & BSM3125-K4.
 - RubberTop execution is securing the position of the SKIDs in stop-start operation.
 - Running on Denirug® low friction profiles.
 - Start-up: August 2014



Application Report Skid Handling



Seat Barcelona, Spain

- BSM3125-K4
 - Longitudinal conveyors in assembly area (K4 - 101mm) wide.
 - Handling SKIDs to and from the warehouse.
 - Conveyor 7 mtr long dry running dual lane 4-inch.
 - Installation date December 2012,
 - Standard BSM acetal chain with Polyester pins
 - Located in Barcelona, Spain

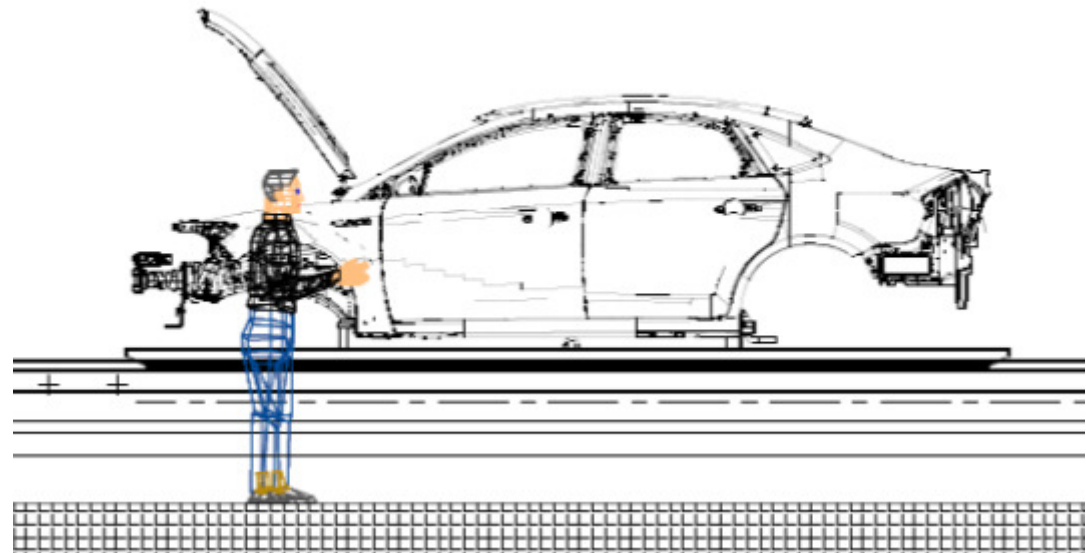


Application Report Assembly



Ford Valencia, Spain

- HCAS6995-K21 People Mover line:
 - 20 mtr long people mover
 - New doorline "A"+"B" & trim extension
 - HCAS antistatic material
 - In assembly pit
 - No brake drive being used
- Start-up: June 2014



Application Report Assembly



Volkswagen Taubaté, Brasil

- HCAS6999-K39 People mover line:
 - 40 mtr people mover conveyor
 - 2 conveyors besides car conveyors
 - Standard plastic pins
 - Speed up to 2,2 m/min
 - Running on High Density plastic wearstrips
 - In final inspection area
- Final inspection conveyor
 - Conveying workers only
- Start-up: March 2013



Application Report Assembly



Skoda Mlada Boleslav, Czech Republic

- **Project name: „Montage Octavia A0 hall M1“**
 - Chain HCAS 6995-K126 PBT pin
 - Sprockets: NS 5996 T14 S90
- **Information about conveyor:**
 - People mover, final assembly of Fabia
 - Length of conveyor: 65 meters (210 ft)
 - Width: 3200 mm
 - Material antistatic HCAS
 - 1 tact = 6,5 meters (21 ft)
 - Load per tact = cca 500 kg
 - Speed: 8 m/min
 - Temperature: 20-30 °C
- **Start-up: August 2013**



Application Report Parts



- **Hyundai Montgomery (AL), USA**
 - People mover conveyors in assembly line:
 - 113,5 mtr conveyor – K90 (2,3 mtr)
 - Conveying workers only
 - Equipped with 6990 Hybrid chain
 - 21mtr, 27 mtr, 35mtr and 39 mtr support conveyors using HCAS6999
 - K120 and K78 wide
 - Conveying workers only
 - Start up date:
January 2013



Application Report Assembly



Volkswagen Emden, Emden, Germany

- **FRESD1005-KM3230 chain:**
 - 2 x 30 mtr (100 ft) long conveyors, 3230mm wide (nominal)
 - 1-inch, 12,7mm thick MatTop chain
 - FRESD1005 equipped, meeting DIN4201-B1
 - ESD specifications $<10^6$ Ohm/sq
- **Information about conveyor:**
 - Assembly people mover conveyor
 - Conveyor for Volkswagen Passat and Passat Hybrid
- **Start-up: August 2014**



Suspension Assembly



Tesla Motors, Palo Alto, CA. USA

- BSM6999H4-27
 - Suspension sub-assembly conveyors
 - Low profile – floor mounted
 - 1 Conveyor - length 125 ft
 - 2 Conveyors – length 75 ft
 - 6999 infeed and discharge conveyors – length 15 ft
 - Robot loaded and unloaded
 - Application requirements - Low noise and zero pulsation
- Start-up July 2014



GAC Toyota Plant II, Guangzhou, China

广汽丰田汽车有限公司
GAC TOYOTA MOTOR CO., LTD.



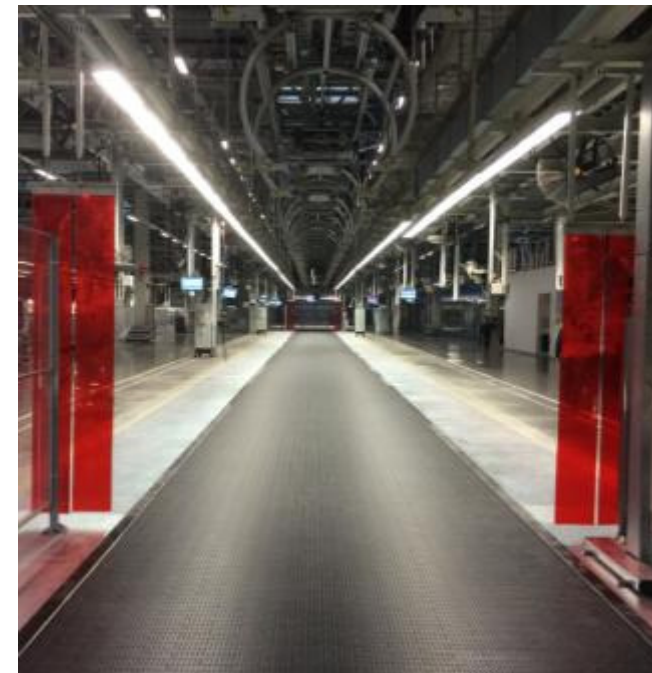
- HCAS6999-K114.
 - 18mtr long, 2.9mtr wide People Mover
 - Antistatic chain material
 - AS specifications 10^{11} – 10^{13} Ohm/s.
- Application information:
 - 6.0 mtr takt length
 - 400 Kg takt (max 4 workers)
- Start-up Mar 2015

Application Report Assembly



BMW Tiexi (Shengyang), China

- **Project name: People mover conveyors B51**
 - Chain BSM6995H4-K126
 - Sprockets: KU6990H-14T
- **Information about conveyor:**
 - People mover, final assembly area
 - Length of conveyor: 61m (195ft)
 - Width: 3200 mm
 - Material antistatic BSM
 - Surface resistivity chain: $<10^3$ Ohm/sq
 - 1 tact = 6,5 meters (21 ft)
 - Load per tact = cca 500 kg
 - Wax residue can be present on the chain
 - Speed: 8 m/min
 - Temperature: 20-30 °C
- **Start-up: February 2015**

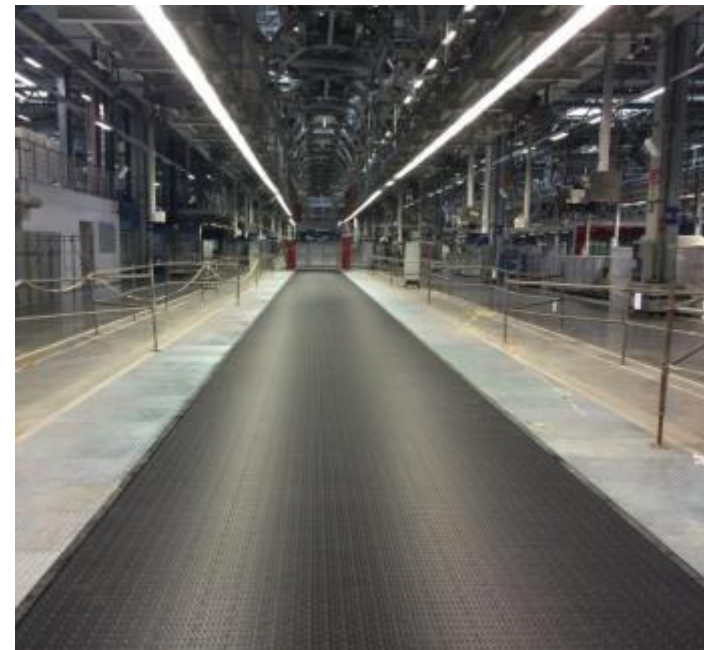


Application Report Assembly



BMW Tiexi (Shengyang), China

- **Project name: People mover conveyors B30 / B32-33**
 - Chain BSM6999H4-K126
 - Sprockets: KU6990H-14T
- **Information about conveyor:**
 - People mover, final assembly area
 - Length of conveyor: 90m (295ft)
 - Width: 3200 mm
 - Material antistatic BSM
 - Surface resistivity chain: $<10^3$ Ohm/sq
 - 1 tact = 6,5 meters (21 ft)
 - Load per tact = cca 500 kg
 - Wax residue can be present on the chain
 - Speed: 8 m/min
 - Temperature: 20-30 °C
- **Start-up: February 2015**



Application Report Assembly



BMW Tiexi (Shengyang), China

- **Project name: People mover conveyors B53-54 / B55 / B57-59**
 - Chain BSM6995H4-K126
 - Sprockets: KU6990H-14T
- **Information about conveyor:**
 - People mover, final assembly area
 - Length of conveyor: 160m (525ft)
 - Width: 3200 mm
 - Material antistatic BSM
 - Surface resistivity chain: $<10^3$ Ohm/sq
 - 1 tact = 6,5 meters (21 ft)
 - Load per tact = cca 500 kg
 - Speed: 8 m/min
 - Temperature: 20-30 °C
- **Start-up: February 2015**



A photograph showing a row of cars in a factory finish line. The cars are lined up on a grey floor with yellow markings. The cars are in various colors, including white and dark blue. The background shows industrial equipment and a bright light source. A black banner with white text is overlaid on the top half of the image.

5. Automotive Finish Line References



Application Report Finish Line



Volkswagen Hannover, Germany

- **FR-PA6995-K18 chain:**
 - BA5 position towards the finish line
 - 70mtr dual lane conveyors, 6-8 mtr long
 - FR-PA6995 equipped, meeting DIN4102-B1
- **Application information**
 - For Transporter
 - Max car weight 3000Kg
 - Takt length 6.5 mtr
- **Start-up: Mai 2015**



Application Report Finish line



Volkswagen Nutzfahrzeugen, Hannover, Germany

- **FRESD6995-K174:**
 - 2x65 mtr conveyors (210 ft)
 - 4500mm wide
 - FRESD material, meeting DIN4102-B1 & ESD specifications
 - Standard plastic pins
 - Speed up to 2,2 m/min
 - For Volkswagen Amarok and T5 Transporter
- **In finish line area (BA8)**
 - Conveying workers and vehicles only
 - Followed by Water Test equipped with Rexnord 3120-series
- **Start-up: April 2012**



Application Report Finish Line



Volkswagen Nutzfahrzeugen, Hannover, Germany

- **FRES6995-K174:**
 - 2x40 conveyors
 - 4500mm wide
 - FRES6 material, meeting DIN4102-B1 & ESD specifications
 - Standard plastic pins
 - Speed up to 2,2 m/min
 - For Volkswagen Amarok and T5 Transporter
- **In finish line area (BA7b)**
 - Conveying workers and vehicles only
 - Followed by BA8 and Water Test
- **Start-up: April 2012**



Application Report Finish Line



Volkswagen Nutzfahrzeugen, Hannover, Germany

- **FR6995H4-K174 & K222 Hybrid chain:**
 - 2x40mtr long conveyors,4500mm wide
 - 4x80mtr long conveyors,5700mm wide
 - 2x43 mtr long dual lane conveyor, 2x 500mm wide
 - FR6995H4 equipped, meeting DIN4102-B1
 - ESD specifications $<10^3$ Ohm/sq
 - For Volkswagen Amarok and T5 Transporter
- **Start-up: July 2013**



Application Report Finish Line



Volkswagen Changsha, China

- **FR-PA6999H4-K138 Hybrid chain:**
 - BA7 position in the assembly line
 - 1x20mtr long conveyor, 2 mtr wide
 - 1x60mtr long conveyors, 3.5 mtr wide
 - 1x70mtr long conveyors, 3.5 mtr wide
 - Transfer conveyor dual lane using FRES1029-KM510 chain
 - FR-PA6999H4 equipped, meeting DIN4102-B1
 - ESD specifications $<10^3$ Ohm/sq
- **Application information**
 - For VW Polo / Golf / Audi A3
 - Max car weight 2000Kg
 - Takt length 5.2 mtr
- **Start-up: July 2014**



Application Report Fluid Fill



Volkswagen Nutzfahrzeugen, Hannover, Germany

- **FR6995H4-K21 Hybrid chain:**
 - 2x40mtr long conveyors, dual lane, 533mm wide
 - Grid with spillage collection between the tracks
 - FR6995H4 equipped, meeting DIN4102-B1
 - ESD specifications $<10^3$ Ohm/sq
 - Conveyor lanes connected using Rexnord Thomas XTSR style disc coupling
 - For Volkswagen Amarok and T5 Transporter
- **Start-up: July 2013**



Application Report Finish Line



Volkswagen Osnabrück, Germany

- **FR-PA6999H4-K84 Hybrid chain:**
 - BA7 position in the assembly line
 - 1x37mtr long conveyors, 2,1 mtr wide
 - First conveyor after EHB
 - FR-PA6999H4 equipped, meeting DIN4102-B1
 - ESD specifications $<10^3$ Ohm/sq
 - Equipped with pushers and side plates
- **Application information**
 - For Porsche Cayman
 - Max car weight 3000Kg
 - Takt length 6.2 mtr
- **Start-up: Mai 2015**



6. Automotive Final Inspection References



Application Report Water Test



Volkswagen (VWI), Pune, India

- BYSM6999-K16 Water test line:
 - 24 mtr water test conveyor
 - 1 tracks, 16-inch wide
 - Holes in the sprocket pockets
 - Standard plastic pins
 - Speed up to 2,2 m/min
 - Running on High Density plastic wearstrips
 - In final inspection area
- Final inspection conveyor
 - Conveying vehicles only
- Start-up: June 2011



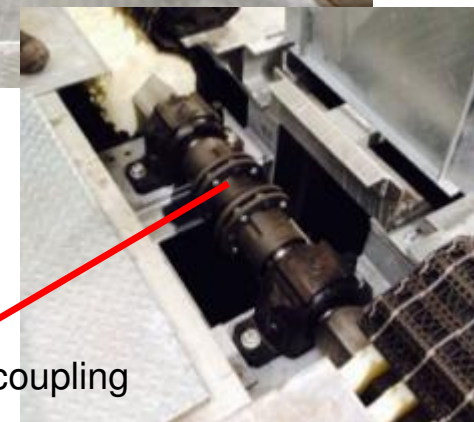
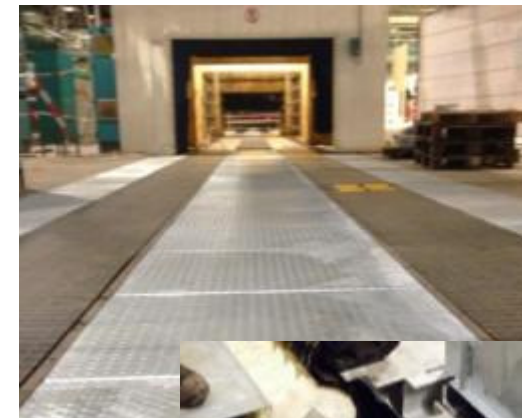
Application Report Water test



VDL Nedcar (BMW), Netherlands



- BSM6995H4-K21
 - Dual lane water test conveyor.
 - Using Rexnord 6990 Hybrid chain, K21 with machined pushers.
 - Conveyor 60 mtr long dual lane
 - Running on MCC3000 plastic wear plates
 - Using Rexnord XTSR coupling to connect the individual drive shafts
 - Installation date December 2013
 - Located in Born, Netherlands



Thomas XTSR coupling

Application Report Water Test



Volkswagen Nutzfahrzeugen, Hannover Germany

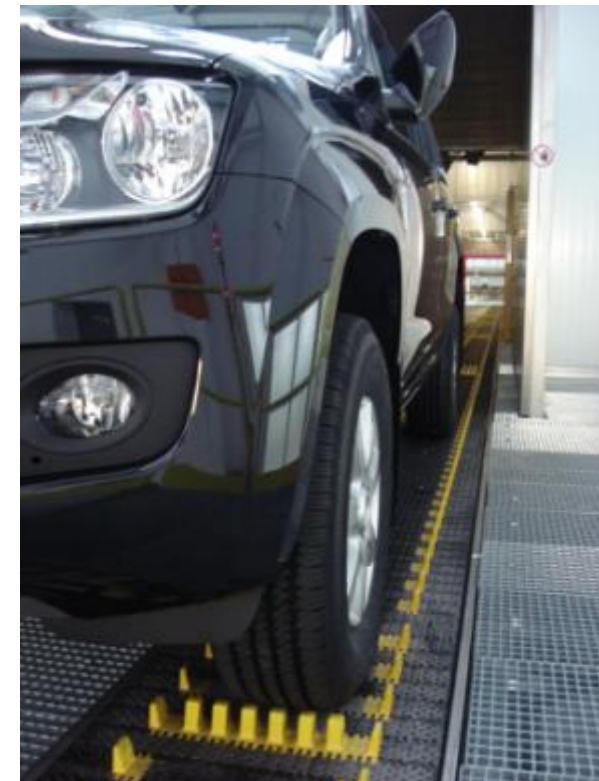
– BYSM3129-K24 Water test line:

- 2 similar 60 mtr long water test installations
- 1 tracks, 24-inch wide
- Equipped with molded pushers and sideguards
- Standard plastic pins
- Speed up to 2,2 m/min
- Running on High Density plastic MCC3000 wearstrips
- In final inspection area

– Final inspection conveyor

- Conveying Transporter T5 and Volkswagen Amarok

– Start-up: April 2012



Application Report Water Test



Skoda Aurangabad, India

- BYSM3129-K16 Water test line:
 - 30 mtr long water test installations
 - 1 tracks, 16-inch wide
 - Equipped with T2 molded pushers
 - Standard plastic pins
 - Running on High Density plastic MCC3000 wearstrips
 - In final inspection area
- Final inspection conveyor
 - Conveying vehicles only
- Start-up: exp. December 2011



Application Report Inspection



Ford Valencia, Spain

- BYSM3129-K24 Water test line:
 - 75 mtr long water test installations
 - 1 tracks, 24-inch wide
 - Equipped with T2 molded pushers
 - Standard plastic pins
 - TC tire position material
- HCAS3129-K24 Final inspection line:
 - 25mtr transfer conveyor & 70 mtr inspection conveyor
 - 1 tracks, 24-inch wide
 - HCAS chain material
 - Equipped with T2 molded pushers
- Start-up: August 2012



Application Report Water Test



Mercedes Benz South Africa – East London

- BYSM3125-K12 Water test line:
 - 40 mtr long water test installations
 - 1 tracks, 12-inch wide
 - Equipped with molded pushers
 - Standard plastic pins
 - Speed up to 2,2 m/min
 - In final inspection area
- Final inspection conveyor
 - Mercedes C-Class production
- Start-up: March 2012



Mercedes-Benz



Application Report People Mover



Volkswagen (VWI), Pune, India

- BYSM6999-K156 Inspection line:
 - 24 mtr people mover conveyor
 - 3962mm wide
 - Standard plastic pins
 - Speed up to 5 m/min
 - In final inspection area
- Final inspection conveyor
 - Conveying vehicles and workers
- Installation date: December 2010



Application Report People Mover



Maruti Suzuki Car Company
(Gurgaon, India)



HCAS6999-K27 Inspection line:

- 20 mtr people mover conveyor
- 685 mm wide (27-inch)
- Standard plastic pins
- Speed up to 4 m/min
- Sidewalk conveyor
 - Conveying workers only
 - In final inspection area
 - 4 conveyors in total (2 inspection lines)
- Start-Up
 - September 2011

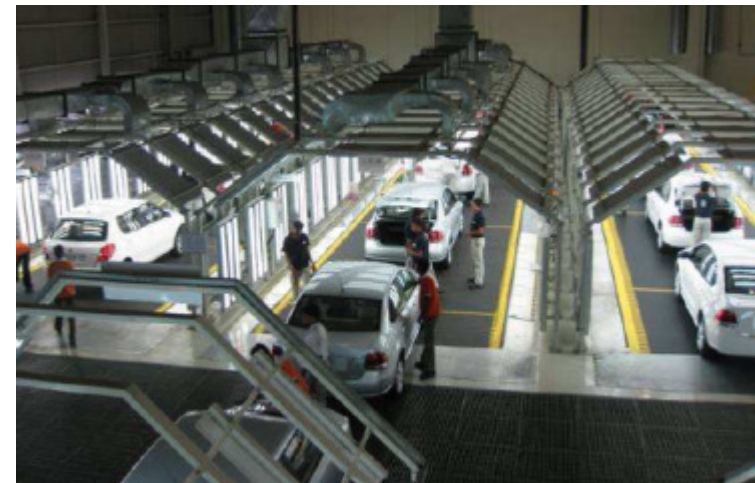


Application Report People Mover



Volkswagen (VWI), Pune, India

- BYSM6999-K156 Inspection line:
 - 24 mtr people mover conveyor
 - 3962mm wide
 - Standard plastic pins
 - Speed up to 5 m/min
 - In final inspection area
- Final inspection conveyor
 - Conveying vehicles and workers
 - CP 8 position
- Conveyor 2 and 3 Dec 2011
 - Replacing UNI CPB due to sprocket wear, pins getting out and chain pulsation.



Application Report People Mover



Volkswagen Pamplona (Navarra) Spain

- HCAS6999-K156 Inspection line:
 - 45 mtr conveyor
 - HCAS Anti-Static material
 - Standard plastic pins
 - 3962mm wide
 - Speed up to 5 m/min
- In final inspection area
 - Conveying vehicles and workers
 - Equipped with T1 automotive pushers for vehicle positioning
 - With perforated area for fumes discharge
- Installation date: December 2010



Application Report Inspection

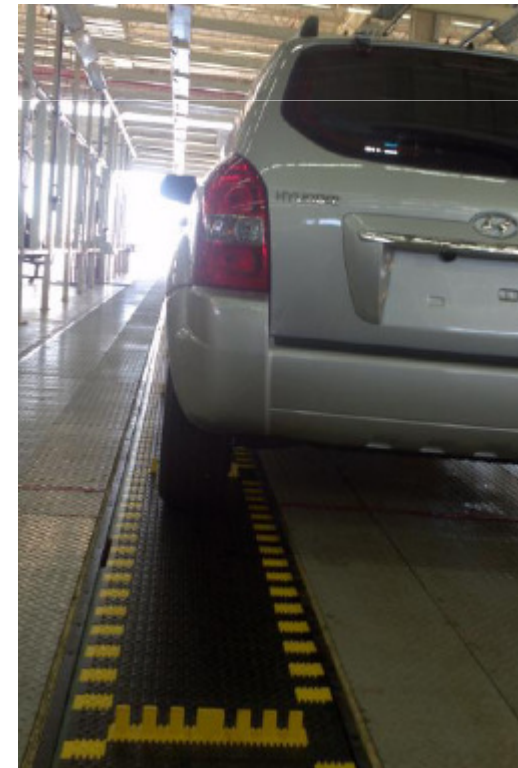


Hyundai Anapolis, Brasil

- HCAS6999-K21 Inspection conveyor:
 - 37 mtr single lane car conveyor
 - Equipped with molded pushers
 - Standard plastic pins
 - Speed up to 5 m/min
 - Running on High Density plastic wearstrips
 - In final inspection area
- Final inspection conveyor
- Start-up: July 2013



HYUNDAI

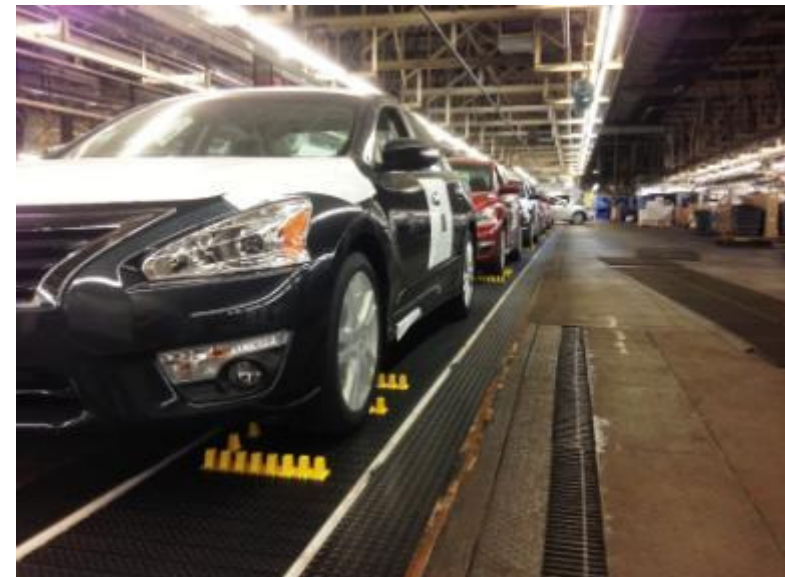


Inspection Conveyor



Nissan, Smyrna, TN. USA

- BSM3125-K24 T2 SG.
 - 60mtr (195ft) long dry running 24-inch (610 mm) wide inspection conveyor after shower conveyor.
 - Running on High density PE wear plates
 - Equipped with BSM3125-24 chains with T2 (2-inch / 50,8mm) pushers, and T2 side guard arrangement to securely position the vehicle.
 - Equipped with Rexnord Power Transmission components: Planetgear, Link-Belt bearings, roller chain
- Start-up July 2014



Application Report Inspection



Ford Valencia, Spain

- HCAS3129-K32 Inspection conveyor:
 - 93 mtr long inspection conveyor
 - 1 tracks, 32-inch wide
 - Equipped with T2 molded pushers
 - Equipped with T2 Side Guards
 - Standard plastic pins
 - TC tire position material
 - Running on MCC3000 wear plates
- Application information:
 - Vehicle weight 2500 Kg (max)
 - Takt length: 6,2 mtr
- Start-up: August 2014



Application Report Inspection



Volvo Torslanda, Sweden

- **Project name: Inspection conveyor**
 - Chain BSM6999H4-K162
 - Sprockets: KU6990Hybrid T19 R260
- **Information about conveyor:**
 - Inspection conveyors, final assembly
 - Length of conveyor: 100 meters (330 ft)
 - Width: 4100 mm
 - Material: GSM acetal, reinforced tire positions
 - Chain Surface Resistivity: $<10^3$ Ohm/sq
 - 1 tact = 5,7 meters (18,5 ft)
 - Load per tact = ca. 2200 kg
 - Speed: 6,5 m/min
- **Drive construction**
 - Main drive shaft connection using Rexnord Lifelign Gear Couplings
 - Type: 1050G20, Max torque: 56.000 Nm
- **Start-up: June 2014**



Application Report Inspection



Skoda Mlada Boleslav, Czech Republic

- **Project name: Inspection Fabia KB 8 hall M1**
 - Chain BSM6999H4-K126
 - Sprockets: KU6990Hybrid T14 S100
 - 2 conveyors side by side
- **Information about conveyor:**
 - 2 Inspection conveyors, final assembly of Fabia
 - Length of conveyor: 78 meters (255 ft)
 - Width: 3200 mm
 - Material antistatic BSM acetal
 - Chain Surface Resistivity: $<10^3$ Ohm/sq
 - 1 tact = 6,5 meters (21 ft)
 - Load per tact = ca 2000 kg
 - Speed: 8 m/min
- **Start-up: August 2014**

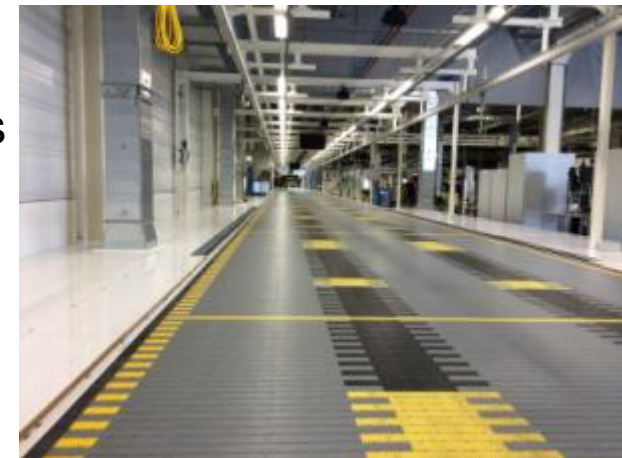


Application Report Inspection



Volvo Gent, Belgium

- **Project name: Inspection conveyor**
 - Chain BSM6999H4-K162
 - Sprockets: KU6990Hybrid T19 R260
- **Information about conveyor:**
 - Inspection conveyors, final assembly
 - Length of conveyor: 109 meters (350 ft)
 - Width: 4100 mm
 - Material: GSM acetal, reinforced tire positions
 - Chain Surface Resistivity: $<10^3$ Ohm/sq
 - 1 tact = 5,7 meters (18,5 ft)
 - Load per tact = ca. 2200 kg
 - Speed: 6,5 m/min
- **Drive construction**
 - Main drive shaft connection using Rexnord Lifelign Gear Couplings
 - Type: 1050G20, Max torque: 56.000 Nm
- **Start-up: August 2014**



Application Inspection conveyor



GAC Toyota (Guangzhou), China

- BSM6999H8-K78.
 - 71mtr (225ft) long dry running 78-inch (1981 mm) wide inspection conveyor in the shipping area.
 - Material antistatic BSM acetal
 - Chain Surface Resistivity: $<10^3$ Ohm/sq
 - Chain equipped with yellow markings and front tire pusher arrangement.
 - Running on High density PE wear plates
- Application information:
 - 2500Kg Pick-up trucks, 6.0 mtr takt length
- Start-up August 2014

广汽丰田汽车有限公司
GAC TOYOTA MOTOR CO., LTD.



Volkswagen Changsha, China

- HCAS6999-K141 Hybrid chain:
 - ZP8 position in the assembly line
 - 1x70mtr long conveyors, 3.5 mtr wide
 - Antistatic chain material
 - AS specifications $10^{11} - 10^{13}$ Ohm/sq



ERROR: stackunderflow
OFFENDING COMMAND: ~
STACK: